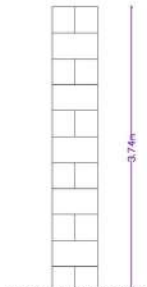
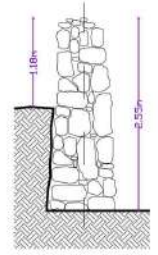


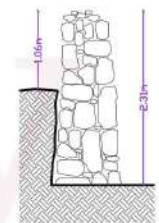
**SECTION D1-D1**  
SCALE: 1:50  
PROPOSED RUBBLE WALL



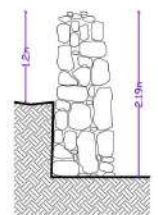
**SECTION D2-D2**  
SCALE: 1:50  
EXISTING ASHLAR WEATHERED STONE



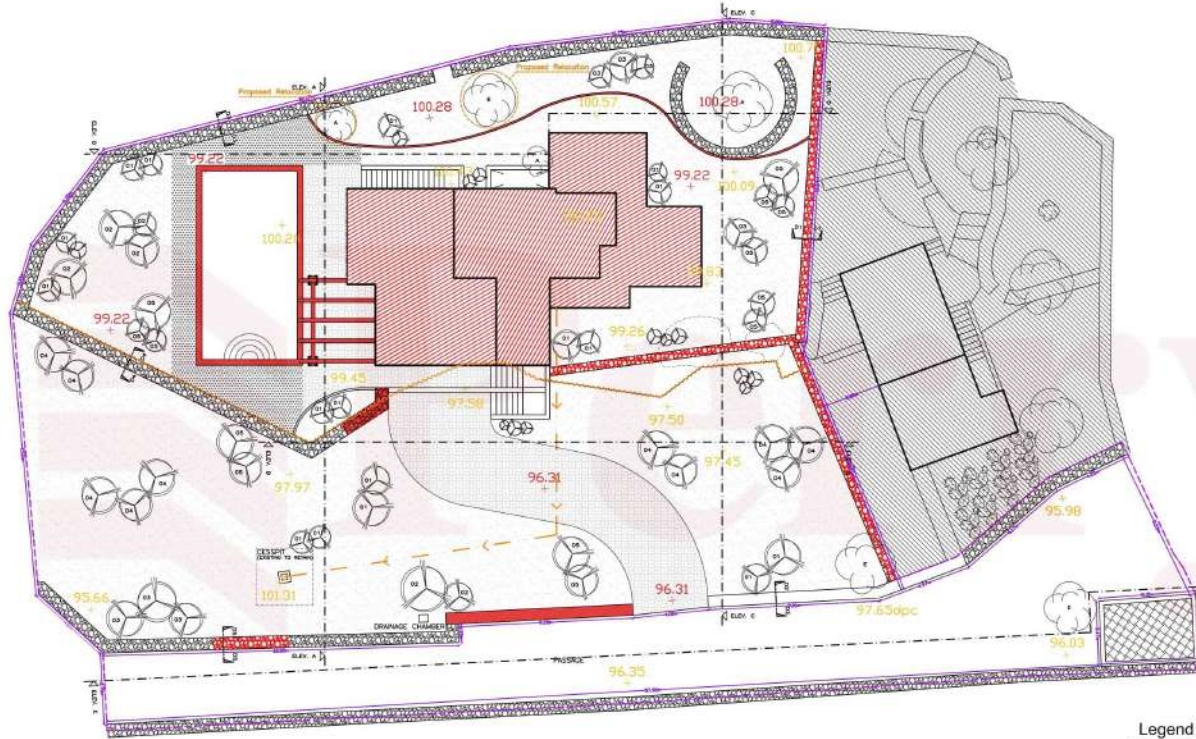
**SECTION D3-D3**  
SCALE: 1:50  
EXISTING RUBBLE WALL



**SECTION D4-D4**  
SCALE: 1:50  
EXISTING RUBBLE WALL



**SECTION D5-D5**  
SCALE: 1:50  
PROPOSED RUBBLE WALL



**PROPOSED BLOCK PLAN**  
SCALE: 1:200

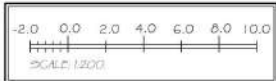
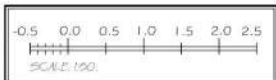
Site Area	1550m <sup>2</sup>
Gross Blocks	160m <sup>2</sup>
Soft Landscaping	741m <sup>2</sup>

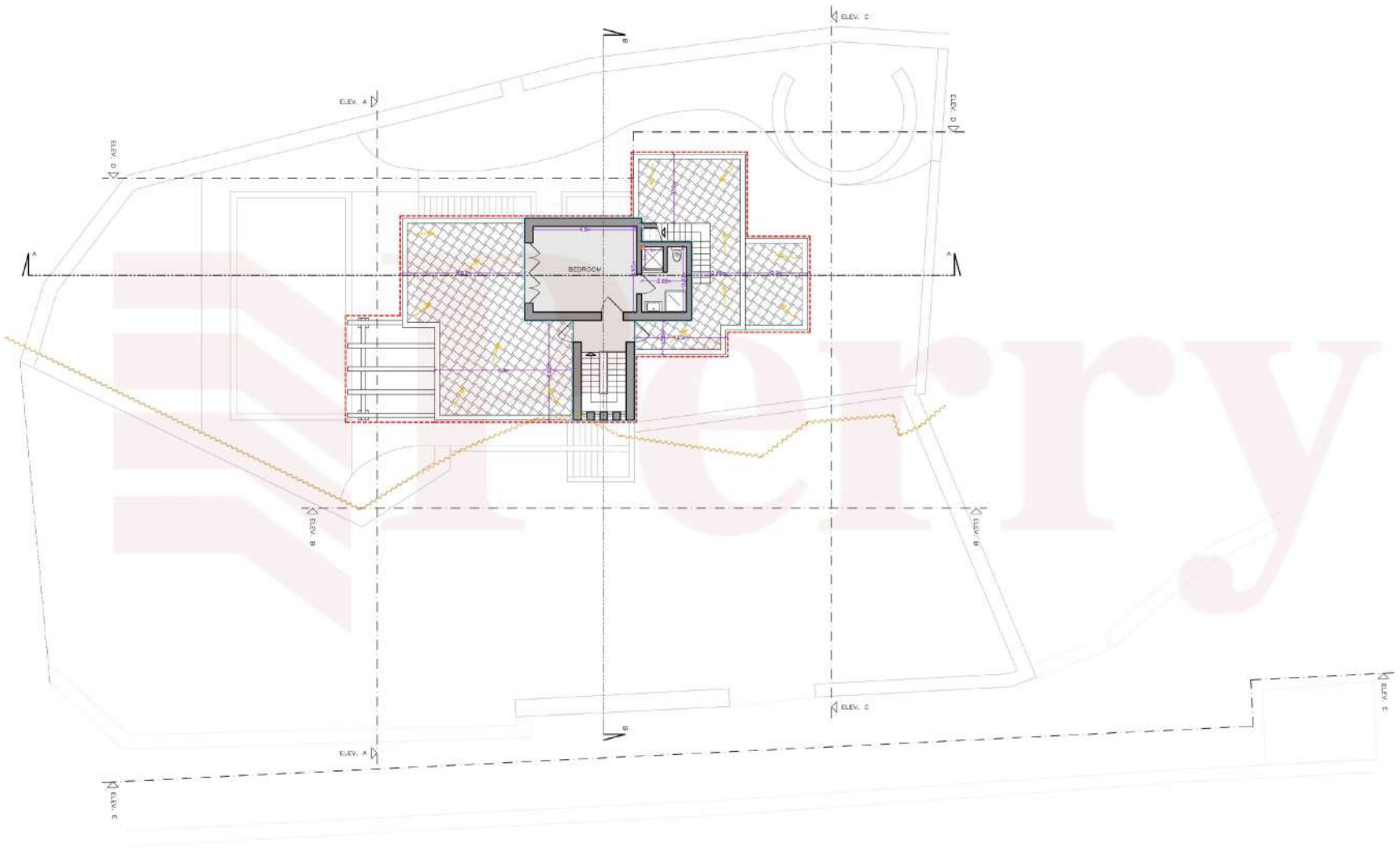
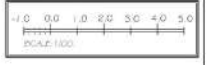
**Legend**

- Proposed Construction
- Existing Rubble Walls
- Proposed Rubble Walls
- Soft Landscaping (Soil)
- Low Shrubs
- Hard Landscaping (Grass Blocks)
- Existing Rock Alignment
- Pipe Work, Direction of Flow to Cesspit
- Site Boundaries
- Existing Site Levels
- Proposed Site Levels
- Third Party

**Proposed Vegetation**

- |  |   |  |
|--|---|--|
| 01<br>Caper<br>(Capparis Spinosa)          | 04<br>Almond Tree<br>(Prunus Dulcis)    | A<br>Pine Tree<br>(Pinus)              |
| 02<br>Great Sage<br>(Artemisia Tridentata) | 05<br>Aleppo Pine<br>(Pinus Halepensis) | E<br>Carob Tree<br>(Ceratonia Siliqua) |
| 03<br>Judas Tree<br>(Cercis Siliquastrum)  | Small Plants                            | Prickly Pear<br>(Opuntia)              |

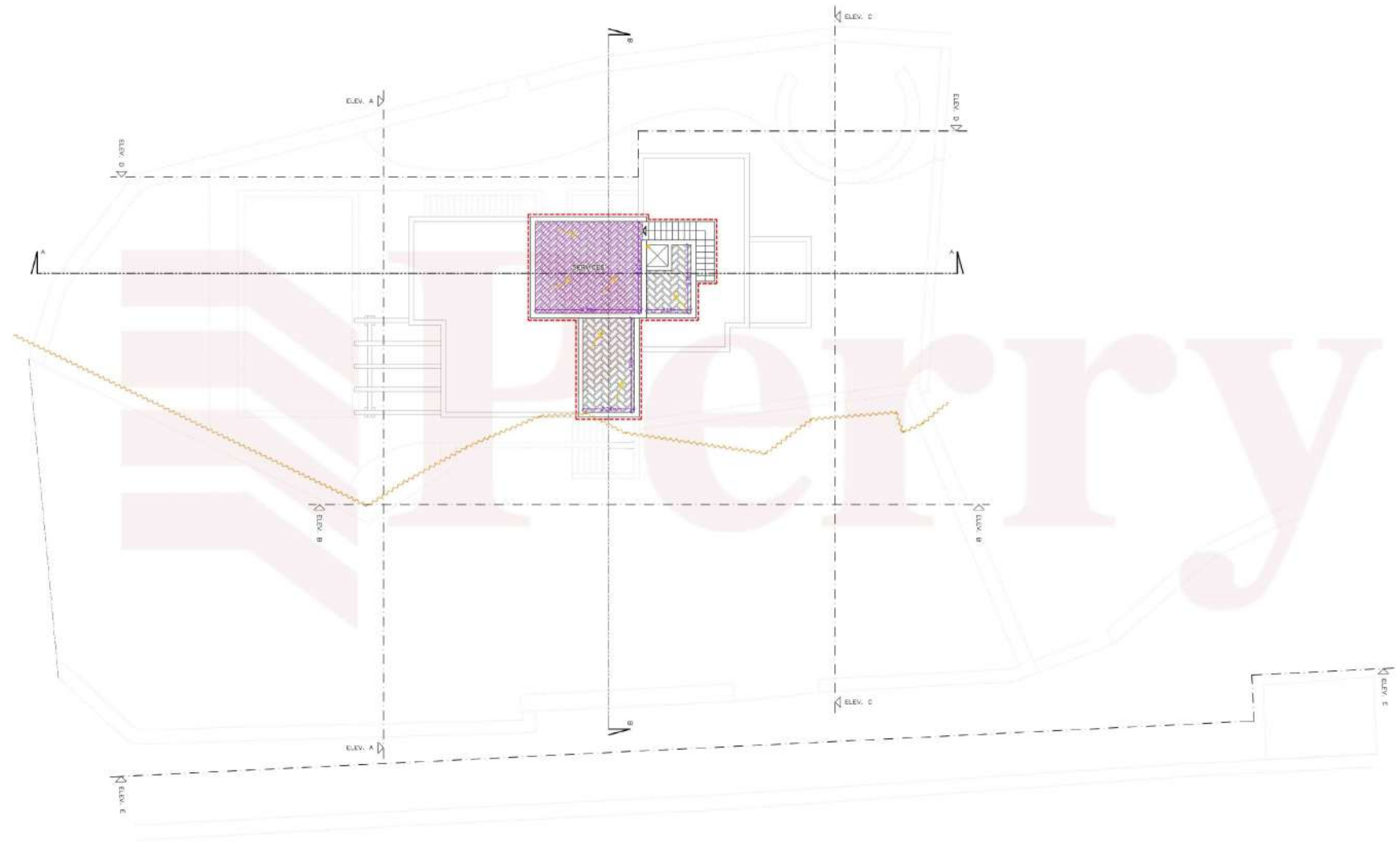
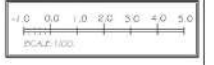




Site Area	1590m <sup>2</sup>
Drilling	Gross Floor Area
Plan Area	47m <sup>2</sup>

**PROPOSED FIRST FLOOR**  
SCALE: 1:100

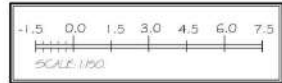
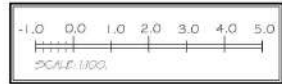
- Legend**
- Proposed Construction
  - Gross Floor Area (47m<sup>2</sup>)
  - Rain Water Pipes
  - Existing Rock Alignment



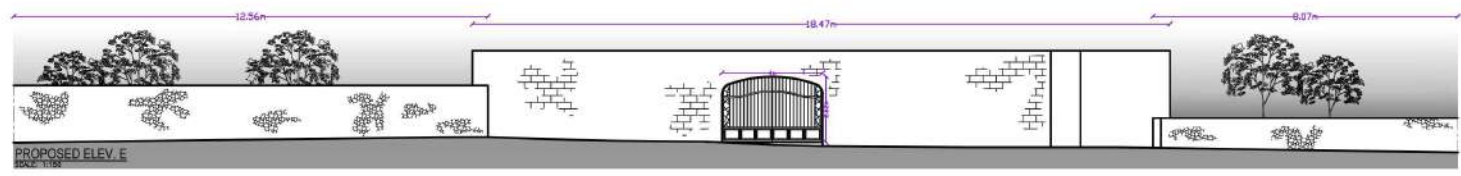
**PROPOSED ROOF LEVEL**  
SCALE: 1:100

NO.	DESCRIPTION	DATE
01	ISSUED FOR PERMITTING	10/20/2023
02	ISSUED FOR CONSTRUCTION	11/15/2023
03	ISSUED FOR AS-BUILT	12/31/2023
04	ISSUED FOR FINAL REVIEW	01/31/2024
05	ISSUED FOR RECORD	02/28/2024
06	ISSUED FOR ARCHIVE	03/31/2024
07	ISSUED FOR DESTRUCTION	04/30/2024
08	ISSUED FOR RECONSTRUCTION	05/31/2024
09	ISSUED FOR MAINTENANCE	06/30/2024
10	ISSUED FOR DEMOLITION	07/31/2024
11	ISSUED FOR REPAIR	08/31/2024
12	ISSUED FOR RENOVATION	09/30/2024
13	ISSUED FOR RESTORATION	10/31/2024
14	ISSUED FOR REPLACEMENT	11/30/2024
15	ISSUED FOR REPAIR AND MAINTENANCE	12/31/2024
16	ISSUED FOR REPAIR AND MAINTENANCE	01/31/2025
17	ISSUED FOR REPAIR AND MAINTENANCE	02/28/2025
18	ISSUED FOR REPAIR AND MAINTENANCE	03/31/2025
19	ISSUED FOR REPAIR AND MAINTENANCE	04/30/2025
20	ISSUED FOR REPAIR AND MAINTENANCE	05/31/2025
21	ISSUED FOR REPAIR AND MAINTENANCE	06/30/2025
22	ISSUED FOR REPAIR AND MAINTENANCE	07/31/2025
23	ISSUED FOR REPAIR AND MAINTENANCE	08/31/2025
24	ISSUED FOR REPAIR AND MAINTENANCE	09/30/2025
25	ISSUED FOR REPAIR AND MAINTENANCE	10/31/2025
26	ISSUED FOR REPAIR AND MAINTENANCE	11/30/2025
27	ISSUED FOR REPAIR AND MAINTENANCE	12/31/2025
28	ISSUED FOR REPAIR AND MAINTENANCE	01/31/2026
29	ISSUED FOR REPAIR AND MAINTENANCE	02/28/2026
30	ISSUED FOR REPAIR AND MAINTENANCE	03/31/2026
31	ISSUED FOR REPAIR AND MAINTENANCE	04/30/2026
32	ISSUED FOR REPAIR AND MAINTENANCE	05/31/2026
33	ISSUED FOR REPAIR AND MAINTENANCE	06/30/2026
34	ISSUED FOR REPAIR AND MAINTENANCE	07/31/2026
35	ISSUED FOR REPAIR AND MAINTENANCE	08/31/2026
36	ISSUED FOR REPAIR AND MAINTENANCE	09/30/2026
37	ISSUED FOR REPAIR AND MAINTENANCE	10/31/2026
38	ISSUED FOR REPAIR AND MAINTENANCE	11/30/2026
39	ISSUED FOR REPAIR AND MAINTENANCE	12/31/2026
40	ISSUED FOR REPAIR AND MAINTENANCE	01/31/2027
41	ISSUED FOR REPAIR AND MAINTENANCE	02/28/2027
42	ISSUED FOR REPAIR AND MAINTENANCE	03/31/2027
43	ISSUED FOR REPAIR AND MAINTENANCE	04/30/2027
44	ISSUED FOR REPAIR AND MAINTENANCE	05/31/2027
45	ISSUED FOR REPAIR AND MAINTENANCE	06/30/2027
46	ISSUED FOR REPAIR AND MAINTENANCE	07/31/2027
47	ISSUED FOR REPAIR AND MAINTENANCE	08/31/2027
48	ISSUED FOR REPAIR AND MAINTENANCE	09/30/2027
49	ISSUED FOR REPAIR AND MAINTENANCE	10/31/2027
50	ISSUED FOR REPAIR AND MAINTENANCE	11/30/2027
51	ISSUED FOR REPAIR AND MAINTENANCE	12/31/2027
52	ISSUED FOR REPAIR AND MAINTENANCE	01/31/2028
53	ISSUED FOR REPAIR AND MAINTENANCE	02/28/2028
54	ISSUED FOR REPAIR AND MAINTENANCE	03/31/2028
55	ISSUED FOR REPAIR AND MAINTENANCE	04/30/2028
56	ISSUED FOR REPAIR AND MAINTENANCE	05/31/2028
57	ISSUED FOR REPAIR AND MAINTENANCE	06/30/2028
58	ISSUED FOR REPAIR AND MAINTENANCE	07/31/2028
59	ISSUED FOR REPAIR AND MAINTENANCE	08/31/2028
60	ISSUED FOR REPAIR AND MAINTENANCE	09/30/2028
61	ISSUED FOR REPAIR AND MAINTENANCE	10/31/2028
62	ISSUED FOR REPAIR AND MAINTENANCE	11/30/2028
63	ISSUED FOR REPAIR AND MAINTENANCE	12/31/2028
64	ISSUED FOR REPAIR AND MAINTENANCE	01/31/2029
65	ISSUED FOR REPAIR AND MAINTENANCE	02/28/2029
66	ISSUED FOR REPAIR AND MAINTENANCE	03/31/2029
67	ISSUED FOR REPAIR AND MAINTENANCE	04/30/2029
68	ISSUED FOR REPAIR AND MAINTENANCE	05/31/2029
69	ISSUED FOR REPAIR AND MAINTENANCE	06/30/2029
70	ISSUED FOR REPAIR AND MAINTENANCE	07/31/2029
71	ISSUED FOR REPAIR AND MAINTENANCE	08/31/2029
72	ISSUED FOR REPAIR AND MAINTENANCE	09/30/2029
73	ISSUED FOR REPAIR AND MAINTENANCE	10/31/2029
74	ISSUED FOR REPAIR AND MAINTENANCE	11/30/2029
75	ISSUED FOR REPAIR AND MAINTENANCE	12/31/2029
76	ISSUED FOR REPAIR AND MAINTENANCE	01/31/2030
77	ISSUED FOR REPAIR AND MAINTENANCE	02/28/2030
78	ISSUED FOR REPAIR AND MAINTENANCE	03/31/2030
79	ISSUED FOR REPAIR AND MAINTENANCE	04/30/2030
80	ISSUED FOR REPAIR AND MAINTENANCE	05/31/2030
81	ISSUED FOR REPAIR AND MAINTENANCE	06/30/2030
82	ISSUED FOR REPAIR AND MAINTENANCE	07/31/2030
83	ISSUED FOR REPAIR AND MAINTENANCE	08/31/2030
84	ISSUED FOR REPAIR AND MAINTENANCE	09/30/2030
85	ISSUED FOR REPAIR AND MAINTENANCE	10/31/2030
86	ISSUED FOR REPAIR AND MAINTENANCE	11/30/2030
87	ISSUED FOR REPAIR AND MAINTENANCE	12/31/2030
88	ISSUED FOR REPAIR AND MAINTENANCE	01/31/2031
89	ISSUED FOR REPAIR AND MAINTENANCE	02/28/2031
90	ISSUED FOR REPAIR AND MAINTENANCE	03/31/2031
91	ISSUED FOR REPAIR AND MAINTENANCE	04/30/2031
92	ISSUED FOR REPAIR AND MAINTENANCE	05/31/2031
93	ISSUED FOR REPAIR AND MAINTENANCE	06/30/2031
94	ISSUED FOR REPAIR AND MAINTENANCE	07/31/2031
95	ISSUED FOR REPAIR AND MAINTENANCE	08/31/2031
96	ISSUED FOR REPAIR AND MAINTENANCE	09/30/2031
97	ISSUED FOR REPAIR AND MAINTENANCE	10/31/2031
98	ISSUED FOR REPAIR AND MAINTENANCE	11/30/2031
99	ISSUED FOR REPAIR AND MAINTENANCE	12/31/2031
100	ISSUED FOR REPAIR AND MAINTENANCE	01/31/2032

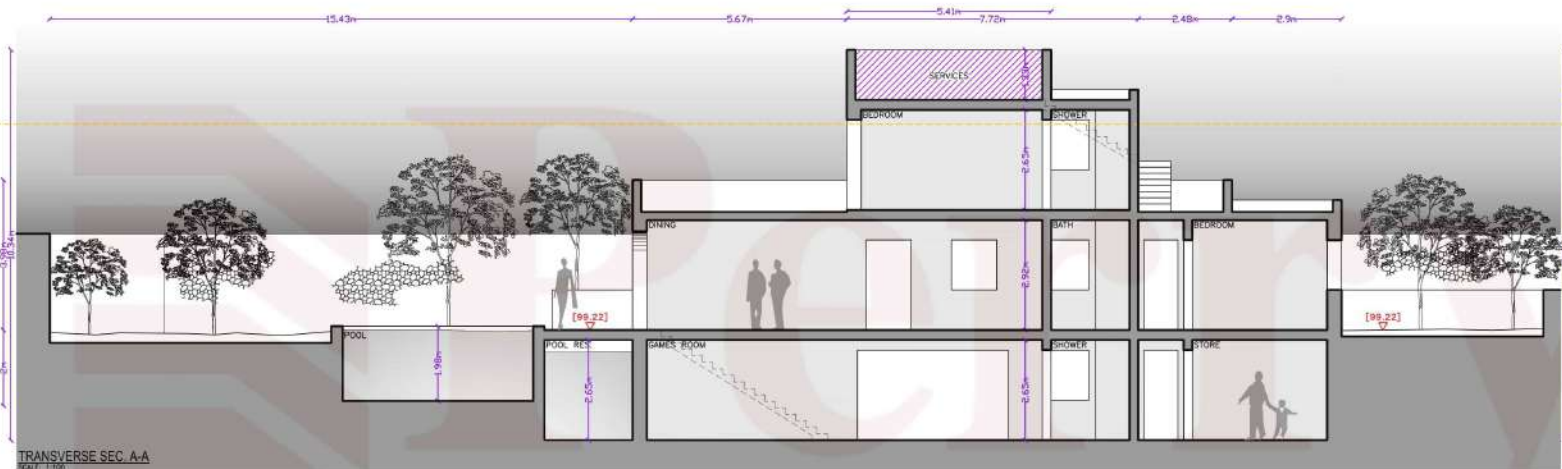
- Legend**
- Proposed Construction
  - Rain Water Pipes
  - Existing Rock Alignment
  - Service Area Enclosed With Proposed Work (Higher Than 4.0m Above Road Level, Water Tanks, Air Conditioning Units, Other Applicable Equipment by The Code Authority)



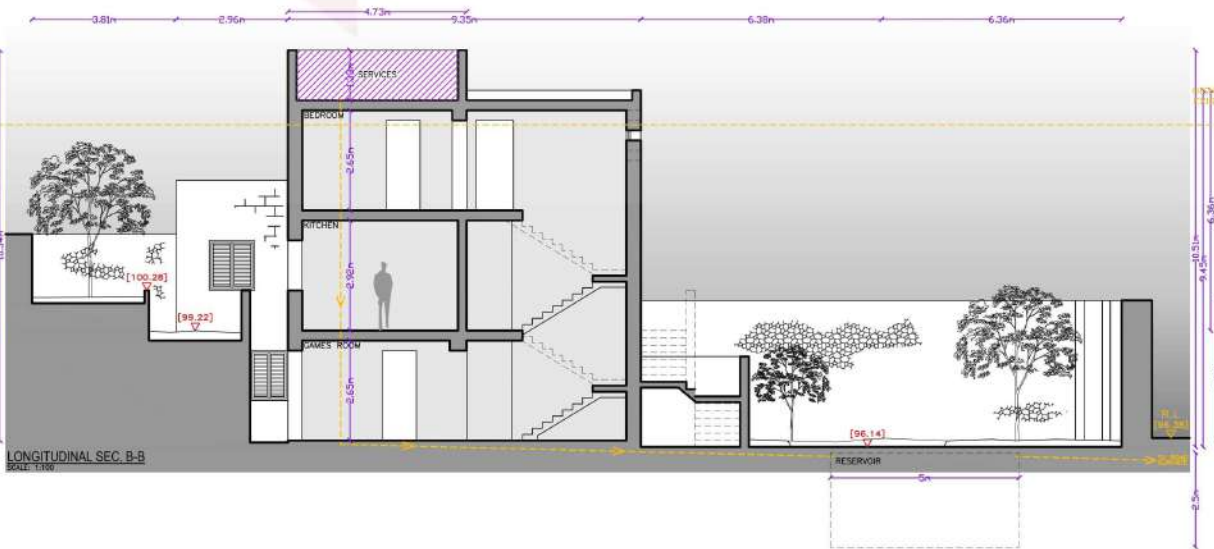
MAIN ENTRANCE FACADE MATERIALS:  
 PRIMARY FLOORS: ASPHALT/CONCRETE FLOOR  
 RESOLUTION SHOWN WITH THESE MATERIALS PARTIAL TO ORIGINAL COLORS



PROPOSED ELEV. E  
 SCALE: 1:100



TRANSVERSE SEC. A-A  
 SCALE: 1:100



LONGITUDINAL SEC. B-B  
 SCALE: 1:100

NO.	DESCRIPTION	DATE
01	...	...
02	...	...
03	Reduction to pool decking	04-14
04	Revision to pool & Change to Main Entrance	08-14
05	Study for Screening Letter Dates 1.8-1-1-15	11-15
06	...	...

REVISIONS

Legend

- Rain Water Pipes
- Service Area Screened With Permeable Pavement (Not Higher Than 1.5m Above Usable Roof Level, Water Tanks, Air-Conditioning Units, Solar Heaters & Satellite Dishes Up To 1.2m Diameter)
- Existing Site Levels
- Proposed Site Levels