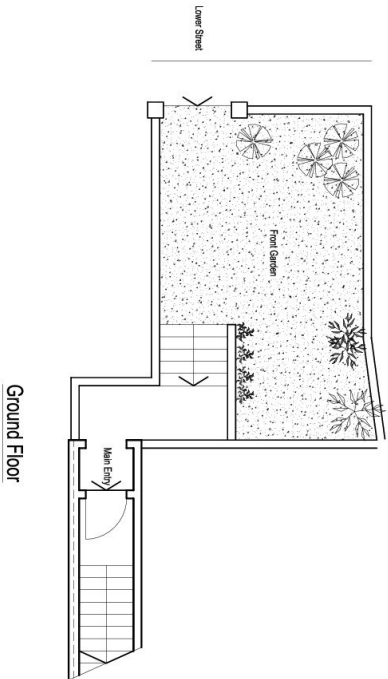
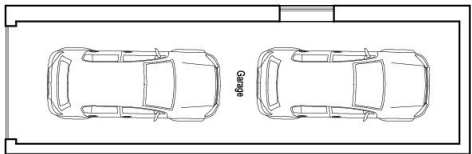


First Floor

Upper Street



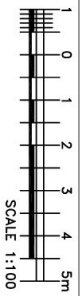
Ground Floor



Semi-Basement

**Areas:**  
 Total Internal Area = 202 m<sup>2</sup>  
 Total Terraces Area = 38 m<sup>2</sup>  
 Total Front Garden Area = 37 m<sup>2</sup>  
 Note: 2-Car Garage with window/ventilation included

Notes:  
 Dimensions in mm



Job Title Malsoneffe Swieqi, Malta  
 Content Existing Plans