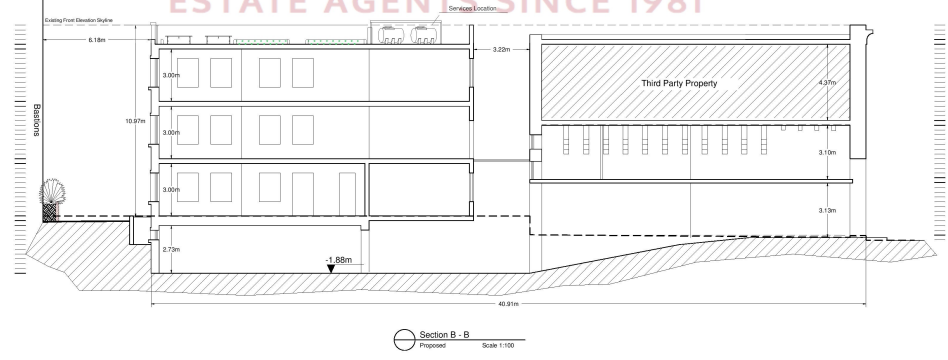


- Finishes:**
1. Soft Stone Wall - Fug II-Fill.
  2. Glazed Timber Apertures.
  3. Wrought Iron Railing.

**Perry**  
ESTATE AGENTS SINCE 1981



Amended 12th December 2013  
Amended 1st July 2014  
Amended 7th July 2014  
Amended 3rd July 2014  
Amended 10th July 2014  
Amended 26th May 2015

Valletta