

Approved / Proposed Typical 2-5 Floor  
SFA Approved No. 1 - 2, S.A. 1-1100



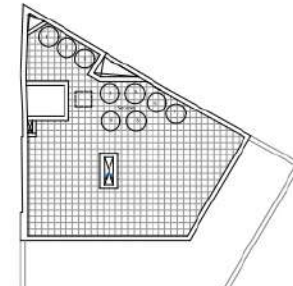
Proposed 6th Floor  
SFA Approved No. 1 - 1100



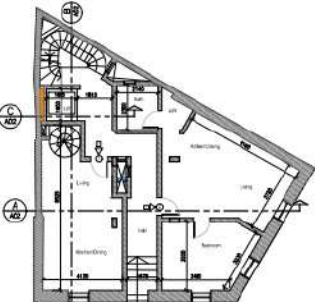
Proposed 7th Floor  
SFA Approved No. 1 - 1100



Proposed 8th Floor  
SFA Approved No. 1 - 1100  
SFA Approved No. 2 - 1100



Proposed Roof over 8th Floor



Approved / Proposed 1st Floor  
SFA Approved No. 1 - 1100  
SFA Approved No. 1 - 1100 (Duplicate)



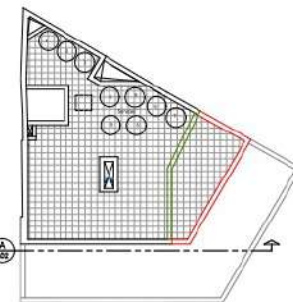
Approved / Proposed 6th Floor  
SFA Approved No. 1 - 1100



Approved / Proposed 7th Floor  
SFA Approved No. 1 - 1100



Approved / Proposed 8th Floor  
SFA Approved No. 1 - 1100  
SFA Approved No. 2 - 1100



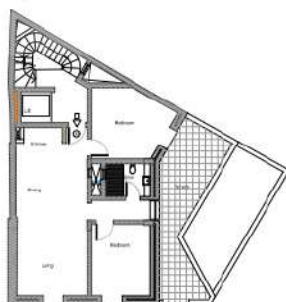
Approved / Proposed Roof over 8th Floor



Approved / Proposed Semi Basement Floor - 0  
SFA Approved No. 1 - 1100 (Duplicate)



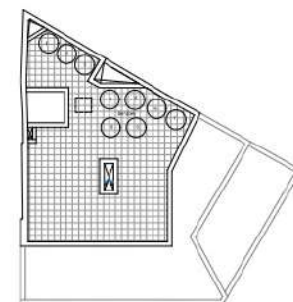
Approved 6th Floor  
SFA Approved No. 1 - 1100  
SFA Approved No. 2 - 1100



Approved 7th Floor  
SFA Approved No. 1 - 1100  
SFA Approved No. 2 - 1100

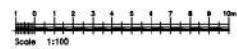


Approved 8th Floor  
SFA Approved No. 1 - 1100  
SFA Approved No. 2 - 1100



Approved Roof over 8th Floor

- Rein. Wall
- Escal. Water
- High Density Structural Insulation
- Structural Masonry Footing
- White Aluminum Spones
- Steel Trailing
- To Section of Boring Bult
- To Concrete
- To Overlaid



Scale 1:1100