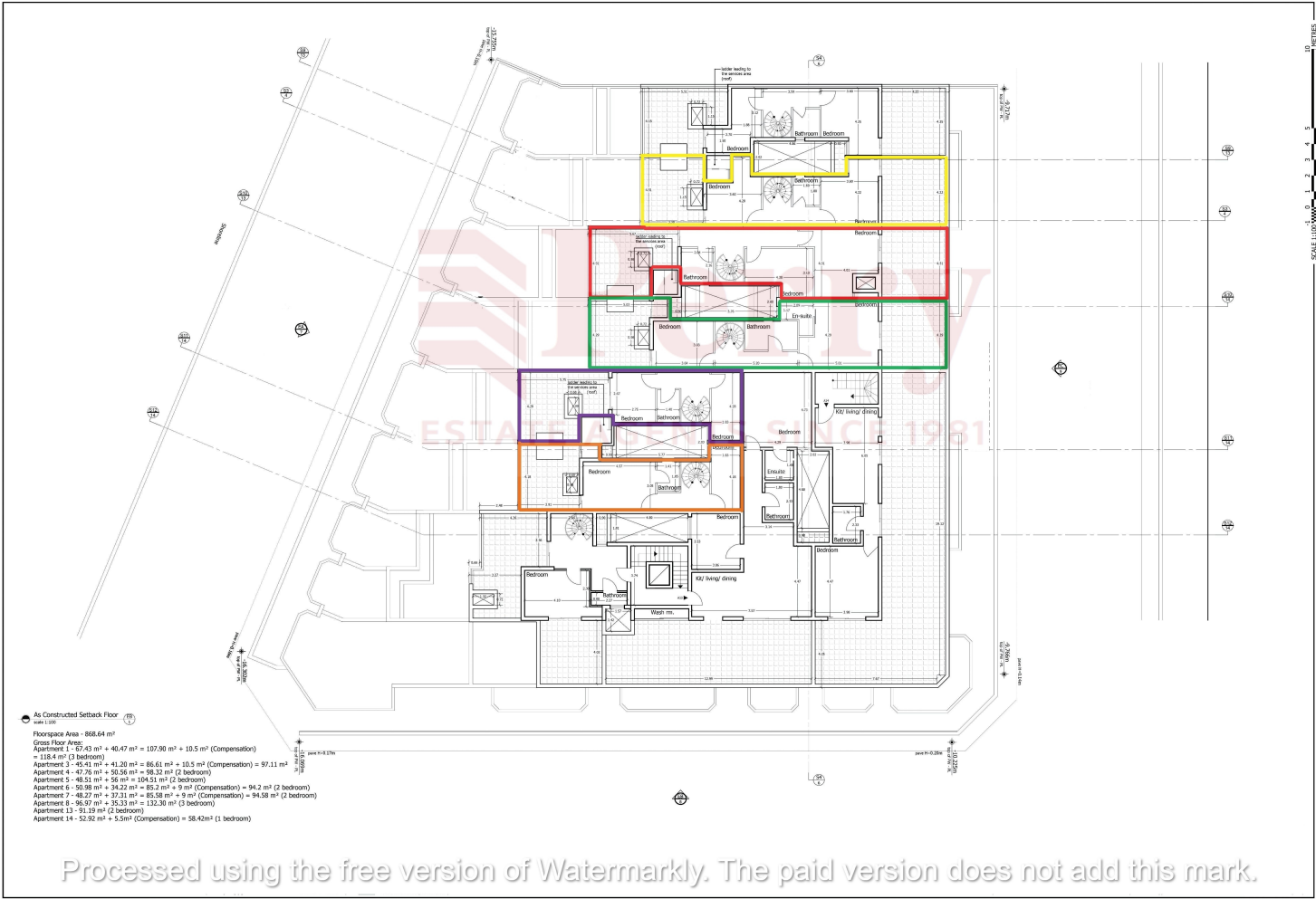


● As Constructed Fifth Floor
 scale: 1:1000
 Floorpace Area - 1990.18 m²
 Gross Floor Area:
 Apartment 2 - 116.12 m² (2 bedroom)
 Apartment 9 - 62.61 m² (1 bedroom)
 Apartment 10 - 85.52 m² + 4.45m² (Compensation) = 90m² (2 bedroom)
 Apartment 11 - 69.33 m² (1 bedroom)
 Apartment 12 - 72.50 m² (1 bedroom)

Processed using the free version of Watermarkly. The paid version does not add this mark.



Processed using the free version of Watermarkly. The paid version does not add this mark.