

Villa A - Roof floor	
Gross Internal Area	38m <sup>2</sup>
Gross External Area	118m <sup>2</sup>

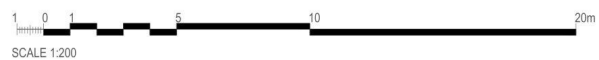
Villa B - Roof floor	
Gross Internal Area	38m <sup>2</sup>
Gross External Area	119m <sup>2</sup>

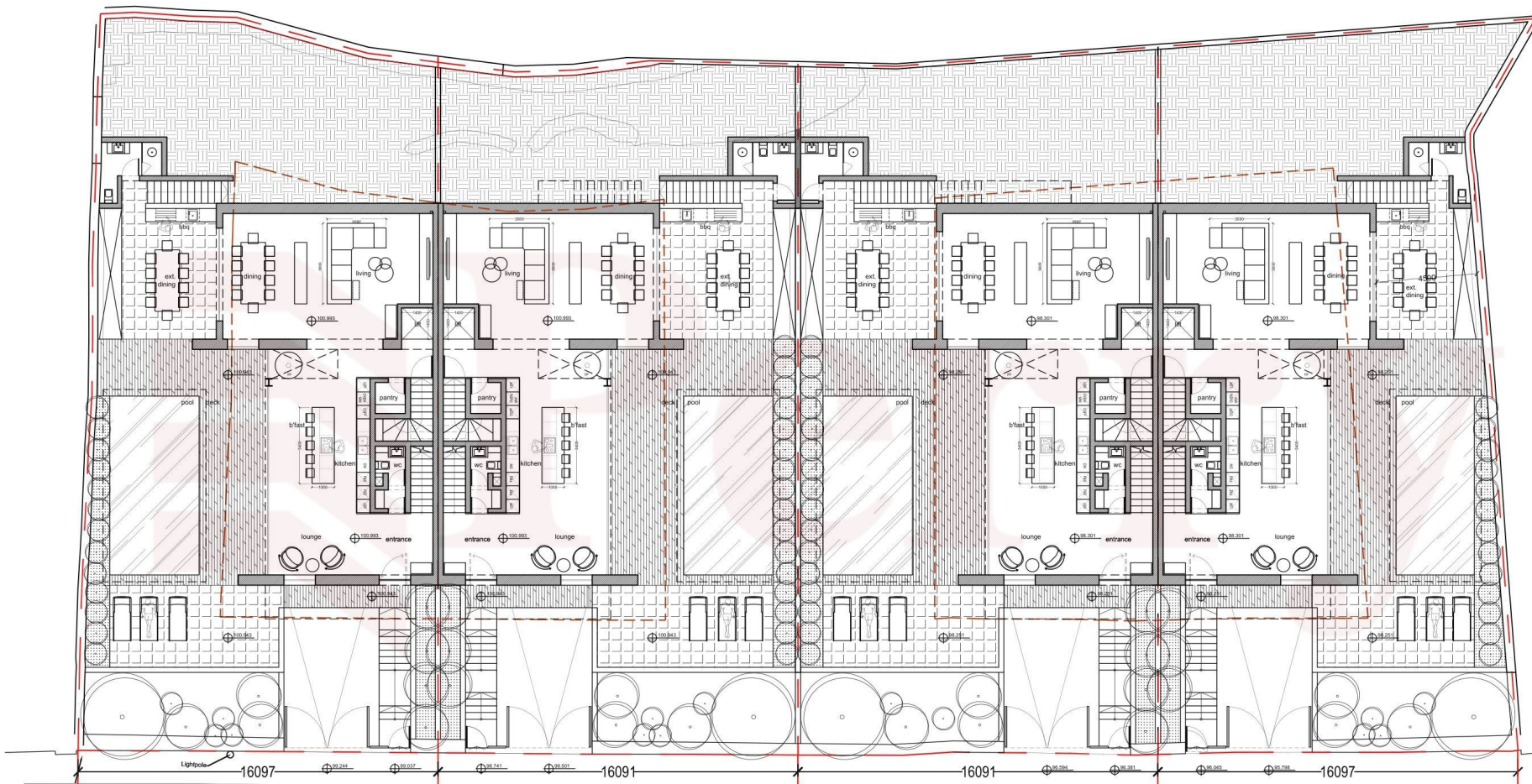
Villa C - Roof floor	
Gross Internal Area	38m <sup>2</sup>
Gross External Area	119m <sup>2</sup>

Villa D - Roof floor	
Gross Internal Area	38m <sup>2</sup>
Gross External Area	117m <sup>2</sup>

Notes:

- To Demolish
- To Construct





H.P.L. ref level  
100.000

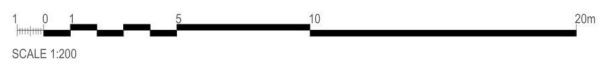
**PLOT 1**  
SITE AREA: 502 sqm  
Ground Floor: GFA 154 sqm

**PLOT 2**  
SITE AREA: 504 sqm  
Ground Floor: GFA 154 sqm

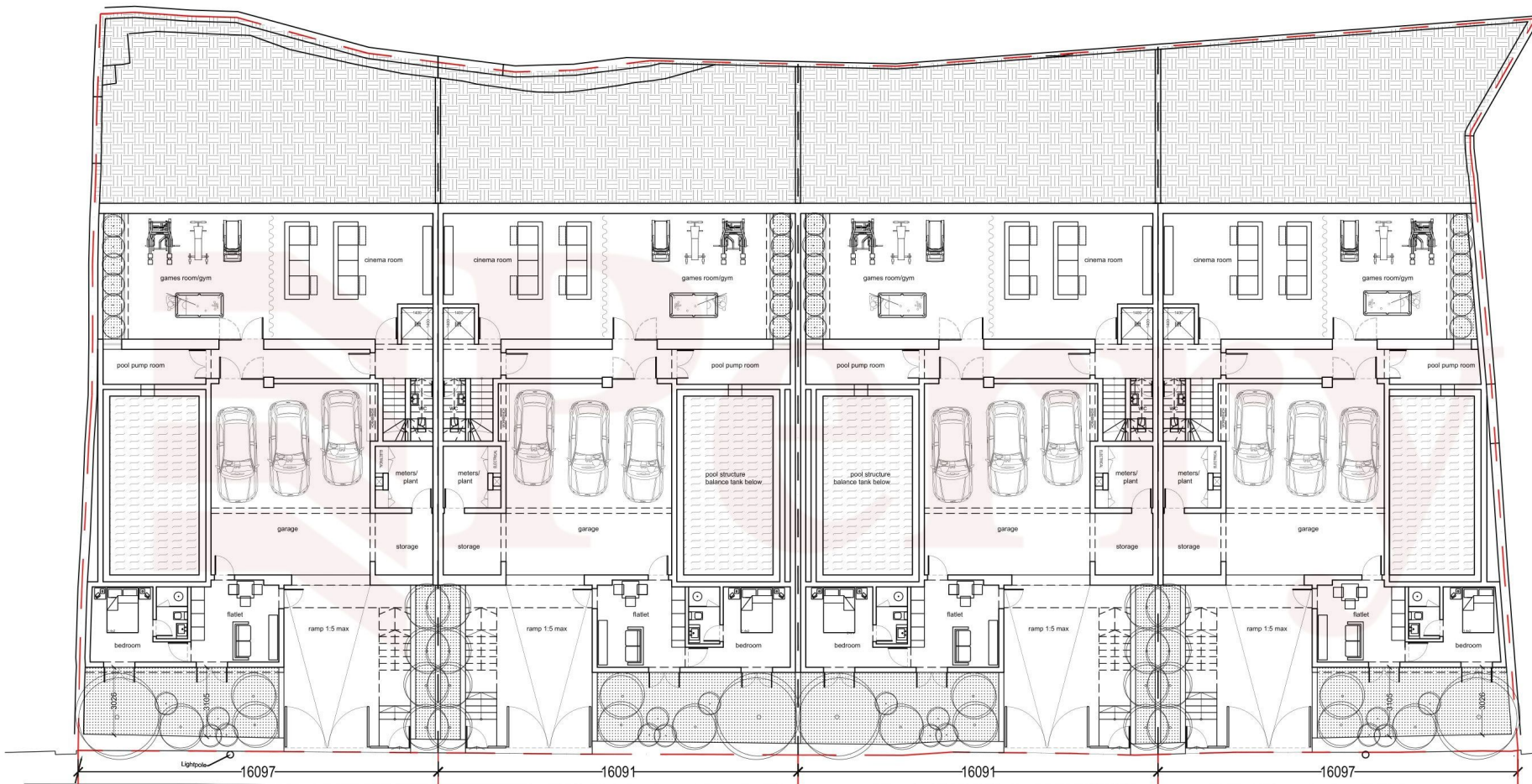
**PLOT 3**  
SITE AREA: 501 sqm  
Ground Floor: GFA 154 sqm

**PLOT 4**  
SITE AREA: 485 sqm  
Ground Floor: GFA 152 sqm

Notes:







H.P.L. ref level  
100.000

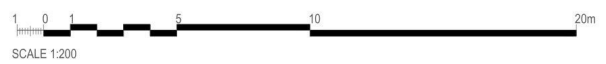
**PLOT 1**  
SITE AREA: 502 sqm  
Basement Floor: GFA 244 sqm

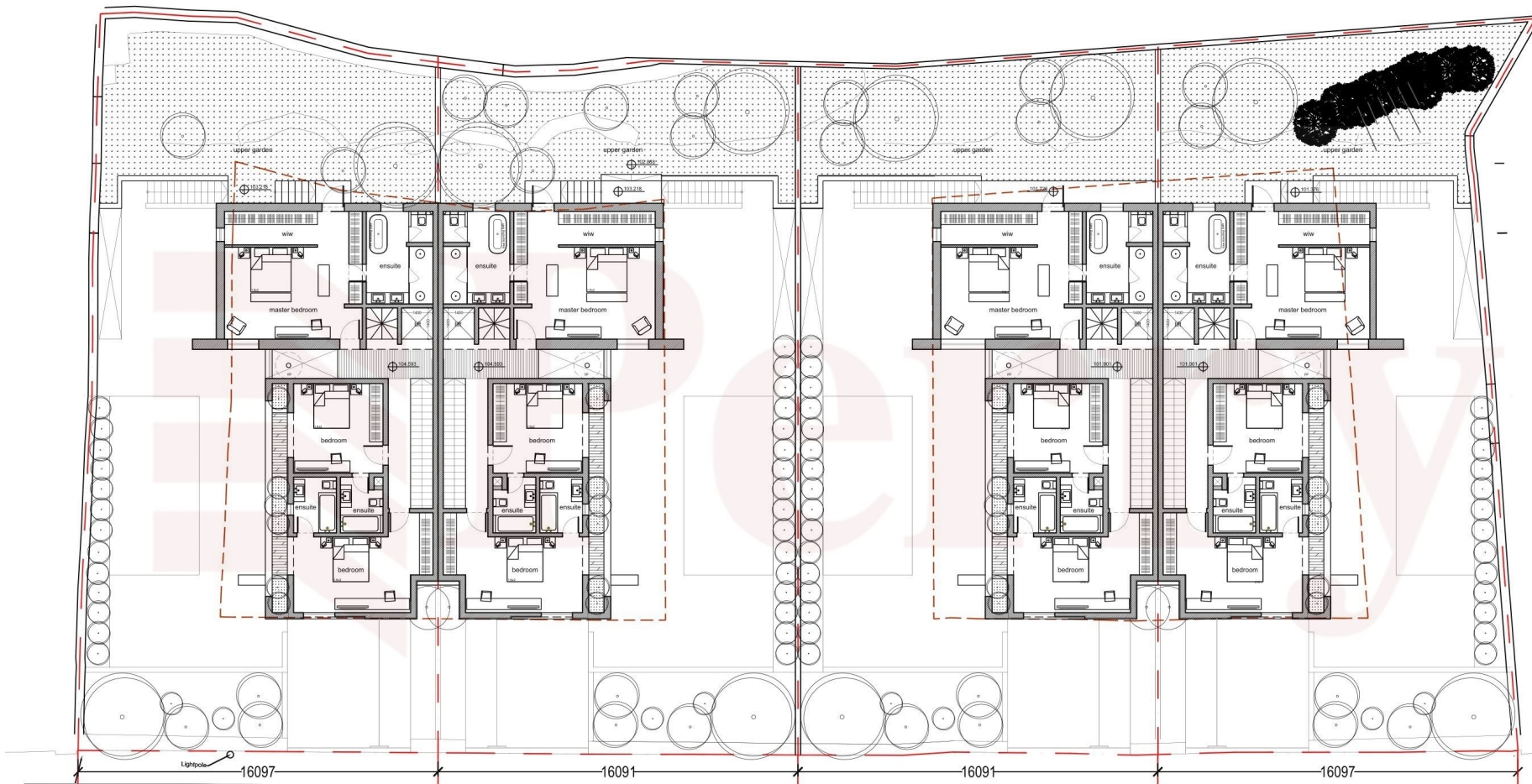
**PLOT 2**  
SITE AREA: 504 sqm  
Basement Floor: GFA 257 sqm

**PLOT 3**  
SITE AREA: 501 sqm  
Basement Floor: GFA 257 sqm

**PLOT 4**  
SITE AREA: 485 sqm  
Basement Floor: GFA 235 sqm

Notes:





H.P.L. ref level  
100.000

**PLOT 1**  
SITE AREA: 502 sqm  
Ground Floor: GFA 146 sqm

**PLOT 2**  
SITE AREA: 504 sqm  
Ground Floor: GFA 147 sqm

**PLOT 3**  
SITE AREA: 501 sqm  
Ground Floor: GFA 147 sqm

**PLOT 4**  
SITE AREA: 485 sqm  
Ground Floor: GFA 145 sqm

Notes:

